

Threats to Tahoe's Ecology: Aquatic Invasive Species

Aquatic invasive species are one of the largest threats to Lake Tahoe's ecology, water quality and clarity. The Tahoe Keys are ground zero for the infestation of aquatic invasive weeds at Tahoe, which continue to spread to the Lake itself, infecting dozens of locations on every shoreline.



Murky, weed-choked water in the Tahoe Keys lagoons encourages toxic algal blooms, also pictured. July 2021.



Tahoe Keys Initiative

Our holistic approach to TACKLE INVASIVE SPECIES

keptahoebblue.org | [@keptahoebblue](https://www.instagram.com/keptahoebblue)   

TAHOE KEYS CONTROL METHODS TEST

Immediate action is needed to safeguard the Lake from the Keys' spreading infestation. The Control Methods Test will help determine which proven and emerging methods can knock the weeds down and keep them in check.

2022 OBJECTIVE: Address the infestation of aquatic weeds in the Tahoe Keys by implementing a robust test of control methods to inform a sustainable, long term solution.



Photo: Brian Hawkins



CITIZEN SCIENTISTS

Volunteers with the League's Eyes on the Lake (EOL) program crowdsource aquatic invasive species sightings using an app on their smart phones. This data drives early detection of new infestations and a rapid response that controls them before they can establish and spread.

2022 OBJECTIVE: Build on success from an early invasive species detection at an EOL-certified Tahoe marina to improve rapid response policies and funding for other new infestations.

CONTROLLING THE INFESTATION

For nearly a decade, the League has been closely involved in implementing innovative treatments - including bubble curtains, laminar flow aeration and boat backup stations - to control the Keys' infestation.

2022 OBJECTIVE: Launch targeted studies of ongoing invasive species control pilot projects in the Tahoe Keys to measure their efficacy and improve the technologies.

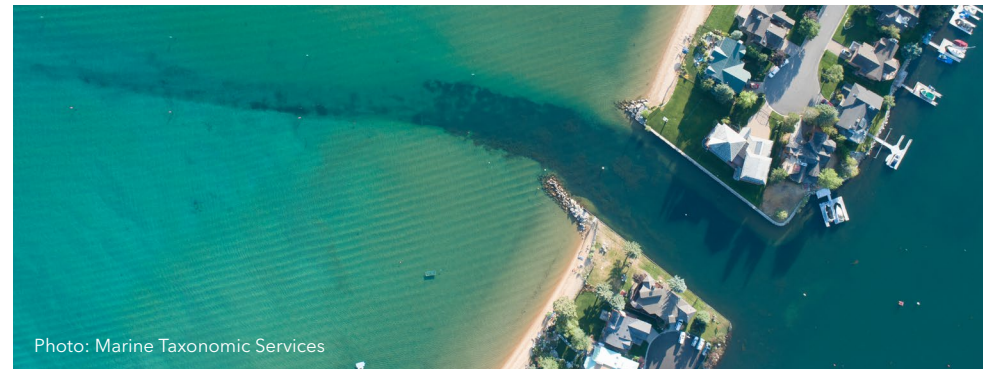


Photo: Marine Taxonomic Services



Tahoe Keys Initiative

Our holistic approach to TACKLE INVASIVE SPECIES

keptahoebblue.org | @keptahoebblue

